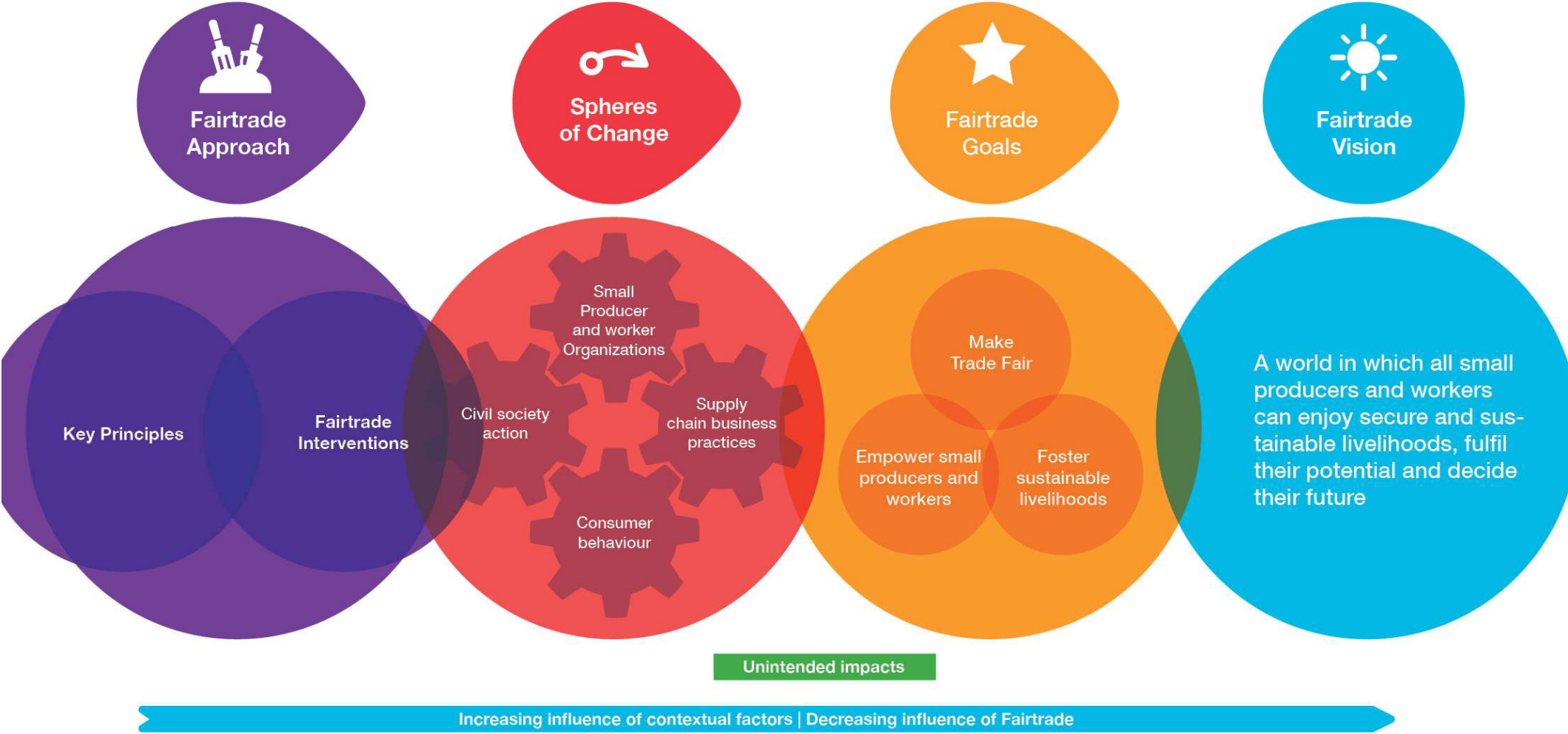


# FAIRTRADE – WIRKUNGEN UND GRENZEN

FABIAN WALDMEIER, 4.2.2019



# FAIRTRADE THEORY OF CHANGE



# IMPACT STUDIES: ODI LITERATURE REVIEW

## KEY FINDINGS



Higher prices and more security when market prices are low



Stronger producer organizations



Fairtrade Premium generates positive impact with wide-ranging investments



Workers: positive impacts on labour standards, decent work in plantations



Limited impact on farming performance



Limited evidence for impacts on gender equity



Mixed evidence for impacts on producer income and wellbeing

## LEARNINGS AND RECOMMENDATIONS



More support needed for good agricultural practices



Trade union relations and living wage key for progress on workers' rights



Increased attention on workers on small farms



Research needs to fill knowledge gaps and tackle methodological challenges

# FARMER RESILIENCE AS KEY FOR SUSTAINABLE SUPPLY CHAINS



# IMPACT STUDIES: CEVAL FOLGESTUDIE (BANANEN)

Impact 1: Improved household income, assets & standard of living	Green
Impact 2: Less risk & vulnerability, increased food security	Light Green
Impact 3: Improved access to basic services	Light Green
Impact 4: Increased environmental sustainability & resilience to climate change	Yellow
Impact 5: Inter-generational sustainability of rural communities	Orange
Impact 6: Increased cooperation & gender equality within communities	Yellow
Impact 7: Increased dignity, confidence, control & choice	Green
Impact 8: Enhanced influence & status of small producers	Green

## Schlüsselergebnisse

- **Preis per Box über dem Mindestpreis**; drei von vier FT Kooperativen erreichen deutlich höhere Preise als Nicht-FT Kooperativen
- Mehrheit der FT ProduzentInnen fühlt sich wenig vulnerabel dank **stabilem Einkommen und Prämie**
- Starke FT Kooperativen zeigen gewisse **Resilienz** in Notsituationen
- Herausforderungen:
  - Klimaveränderungen und -katastrophen (El niño)
  - Wenig Einkommensdiversifizierung
  - Große, kommerzielle FT zertifizierte Plantagen mit höherer Effektivität

*Fairtrade contributes...*

Red	Not at all
Orange	To a small extent
Yellow	To some extent
Light Green	To a moderate extent
Green	To a great extent
Dark Green	To a very great extent

# IMPACT STUDIES: CEVAL FOLGESTUDIE (KAFFEE)

Impact 1: Improved household income, assets & standard of living	Orange
Impact 2: Less risk & vulnerability, increased food security	Orange
Impact 3: Improved access to basic services	Orange
Impact 4: Increased environmental sustainability & resilience to climate change	Yellow
Impact 5: Inter-generational sustainability of rural communities	Red
Impact 6: Increased cooperation & gender equality within communities	Orange
Impact 7: Increased dignity, confidence, control & choice	Yellow
Impact 8: Enhanced influence & status of small producers	Orange

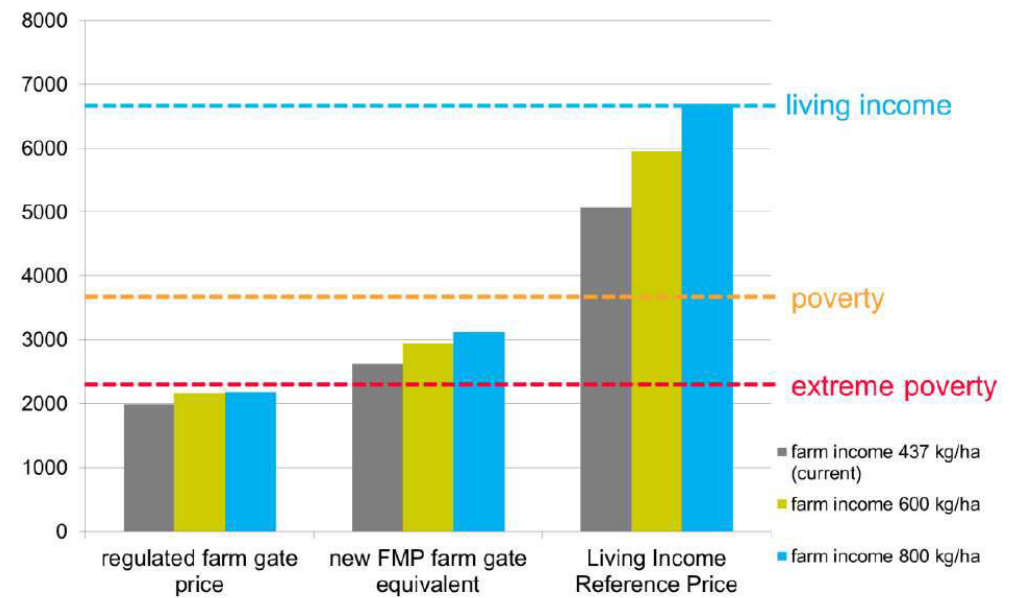
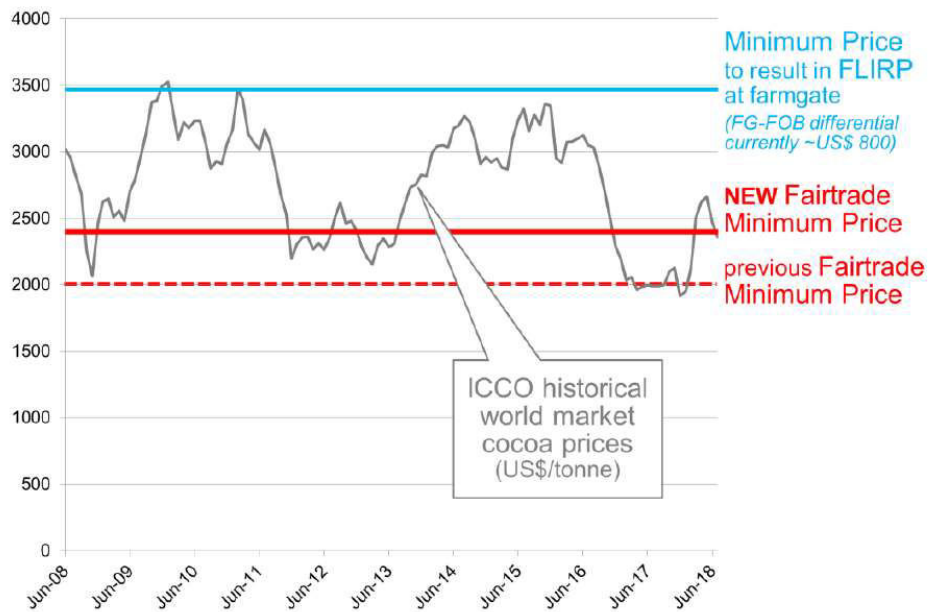
*Fairtrade contributes...*

Red	Not at all
Orange	To a small extent
Yellow	To some extent
Light Green	To a moderate extent
Green	To a great extent
Dark Green	To a very great extent

## Schlüsselergebnisse

- **Verschiedene negative Entwicklungen:** La Roya, Preisfall im Weltmarkt, Verschuldung durch strenge Handelsbedingungen, interne Probleme
- **Zerstörung** von 50 – 80% der Kaffeeflächen + **Verschuldung** aller Farmer
- **Preisfall** um mehr als die Hälfte pro Kg Pergamentkaffee, **Mindestpreis greift**
- **ABER:** abhängig von Qualität&Distanz
- Stärkeres Bewusstsein für **Diversifizierung nach Krise**
- Kooperative durch **Strafzahlung** geschwächt; Nutzung der Prämie um **Schulden** zu zahlen; aber „überlebt“
- Zweifel, Unsicherheit, Ungewissheit unter ProduzentInnen

# LIVING INCOME



# IMPACT STUDIES: CEVAL FOLGESTUDIE (KAKAO)

Impact 1: Improved household income, assets & standard of living	
Impact 2: Less risk & vulnerability, increased food security	
Impact 3: Improved access to basic services	
Impact 4: Increased environmental sustainability & resilience to climate change	
Impact 5: Inter-generational sustainability of rural communities	
Impact 6: Increased cooperation & gender equality within communities	
Impact 7: Increased dignity, confidence, control & choice	
Impact 8: Enhanced influence & status of small producers	

## Schlüsselergebnisse

- FT KakaoproduzentInnen haben **Kenntnisse zu nachhaltigen Landwirtschaftspraktiken** erweitert durch regelmäßige Trainings.
- **Abfallwirtschaft ist häufig ein ungelöstes Problem** in den communities.
- Der **Klimawandel** wird zunehmend, insbesondere von männlichen Produzenten, wahrgenommen.
- FT Produzenten waren **sensibilisiert für die Problematik der Wasserverschmutzung** durch landwirtschaftliche Chemikalien.

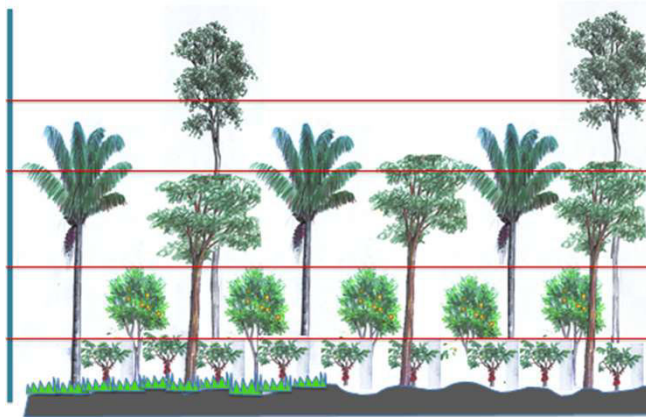
*Fairtrade contributes...*

	Not at all
	To a small extent
	To some extent
	To a moderate extent
	To a great extent
	To a very great extent



# PROJEKT-ARBEIT: KLIMAWANDEL & DIVERSIFIZIERUNG

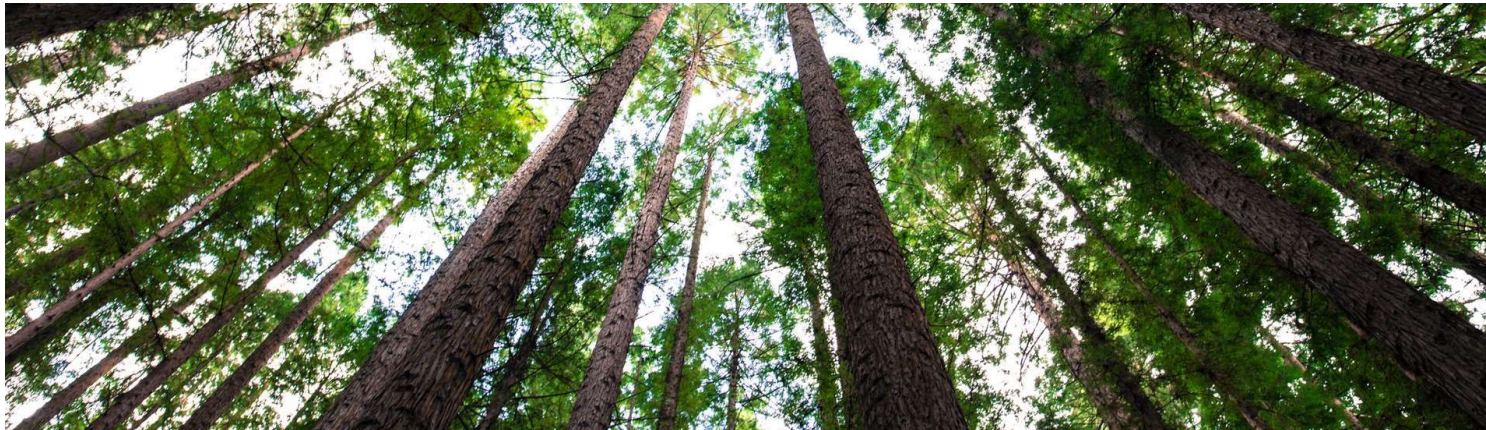
Dynamic agroforestry



Diversification (income & biodiversity)



Carbon Insetting



THANK YOU!



**FAIRTRADE**